



FUKUSHIMA
MEDICAL
UNIVERSITY



公立大学法人

福島県立医科大学



CONTENTS

About Our University	
Message from the President	3
Mission Statement	4
Our Academic Policies	5
Education	
School of Medicine	6
School of Nursing	8
School of Health Sciences	10
Special Course of Midwifery	12
Graduate Schools	14
Medical Care	
University Hospital	16
Aizu Medical Center	18

Efforts for Revitalization	
Fukushima Global Medical Science Center	19
Radiation Medical Science Center for the Fukushima Health Management Survey	20
Translational Research Center	21
Advanced Clinical Research Center	22
Health Promotion Center	23
Thyroid and Endocrine Center/Advanced Clinical Division	
Education and Human Resource Development Division/Medical Support for Futaba Area	24
Appendix	25
Access to the University	28
Campus Map	30



Message from the President | A University Rooted in the Community Making Contributions on a Global Scale

Fukushima Medical University embraces the motto "Turning change into evolution, gaining strength from hardships." We have endured many difficult times in recent years, from the Great East Japan Earthquake and the subsequent Fukushima Daiichi Nuclear Power Plant accident to the COVID-19 pandemic. With every crisis, our university has come together to boldly face new challenges and cultivate the seeds of further evolution.

Recovering from the Great East Japan Earthquake complicated the roles that our university is responsible for, such as improving the efficiency of healthcare delivery, training and educating medical personnel, and promoting research worthy of global recognition. These ongoing efforts and results have drawn high praise from observers in Japan and overseas.

For example, we have helped mentor and train many healthcare professionals in the course of our disaster response efforts, including those that followed the Fukushima Daiichi Nuclear Power Plant accident. Our data and subsequent knowledge related to the nuclear disaster has been shared with a global audience. In addition, we are proceeding with original research in the field of drug development for radiopharmaceuticals. Our protein analysis technology, established through decades of research, is unrivaled, with results leading to the commercialization of IgA antibody masks and sprays to fight COVID-19.

Our efforts to move forward are ongoing, with results that actively contribute to global and local communities, consistent with our mission to realize an even better society. Members of our university work diligently to prove what we believe to be our considerable worth.

Fukushima Medical University will continue to evolve and grow. We aspire to aim even higher as a university rooted in the local community that looks to the future, while overcoming difficulties and building on a track record already recognized around the world.

TAKENOSHITA Seiichi
President

Fukushima Medical University

Mission Statement

Fukushima Medical University was established with the aim of educating and nurturing healthcare professionals who contribute to the promotion of health and well-being of Fukushima residents. At the same time, as a research institution we are mandated to disseminate and apply the findings of our extensive research for the wider national and global society.

Healthcare is an earnest endeavor in which all healthcare professionals join hands and sincerely face the issues of life and health of all people and pave the way for their future; the foundation that should underpin it is profound consideration for the dignity of individuals and high ethical standards.

Fukushima Medical University is dedicated to the comprehensive promotion of education, research, and healthcare as the core values of our institution based on the following principles.

(enacted on June 26, 2019)

- 1 We educate and train healthcare professionals who respect human life and who have high ethical standards.
- 2 We commit to research and innovation in cutting-edge and advanced medicine, nursing, and health science.
- 3 We provide holistic and comprehensive healthcare as a core medical institution of Fukushima Prefecture.

Corporate Organization

	Name
President	TAKENOSHITA Seiichi
Vice President (Revitalization and International Affairs)	HAZAMA Akihiro
Vice President (Fukushima Health Management Survey)	OHIRA Hiromasa
Vice President (Medical Practice and Clinical Education)	TAKEISHI Yasuchika
Vice President (Education and Research)	SUZUKI Hiroyuki
Vice President (Community Medicine)	KONO Koji
Vice President (Management and Internal Control)	KIKUCHI Kenichi
Vice President (Planning and Administration)	KANNO Toshihiko

University Organization

	Name
President	TAKENOSHITA Seiichi
Vice President (Fukushima Health Management Survey)	OHIRA Hiromasa
Vice President (General and Academic Affairs)	SUZUKI Hiroyuki
Vice President (Clinical Education)	TAKEISHI Yasuchika
Vice President (Community Medicine)	KONO Koji
Vice President (International Affairs)	YAMASHITA Shunichi
Vice President (Administration)	OHTO Hitoshi
Vice President (Operations)	KAMIYA Kenji

	Name
Vice President (Doctor Recruitment and Lifelong Health)	FUKUHARA Shunichi
Vice President (Operations)	YOSHIMURA Yasunori
Dean of the School of Medicine	FUJIMORI Keiya
Dean of the School of Nursing	TAKAHASHI Koko
Dean of the School of Health Sciences	YABUKI Shoji
Director of the Special Course of Midwifery	TAKAHASHI Koko

(as of April 1, 2024)

Our Academic Policies

1

Policy on Graduation Certification and Degree Conferment

Diploma Policy

We confer degrees to students who have learned the following competencies:

- Students who have acquired the necessary professional knowledge, skills, and ethics to be a medical professional.
- Students who possess the ability to contribute to society in the fields of welfare and healthcare.
- Students who have acquired the mindset and skills for scientific thinking and lifelong autonomous learning, and who possess the basic ability to disseminate their findings, thus contributing to the advancement of medicine.
- Students who have acquired the necessary number of credits as outlined in the university's graduation requirements.

2

Policy on Curriculum Composition and Implementation

Curriculum Policy

We design and implement our curricula to fulfill the following goals:

- To foster the ability to actively learn about various issues in the constantly advancing field of medicine, detect and solve problems, and cultivate an attitude to continue lifelong learning.
- To impart systematic knowledge of medicine and cultivate discernment as healthcare professionals based on a deep understanding of diseases, while refining communication and collaboration skills.
- To provide hands-on training in actual clinical settings, cultivate a sense of professionalism as healthcare providers, and foster feelings of empathy, patient awareness, and bedside manner.
- To teach the current situation of local medicine in Fukushima Prefecture, as well as the methodology by which public health can be maintained and enhanced.
- To develop motives to pursue high-quality research based on the spirit of scientific inquiry and creativity, and to carry this spirit into the world, beyond education.

3

Policy for Accepting Students

Admission Policy

We seek students who meet the following criteria:

- Students who have high ethics and a deep sense of humanity, and who respect human life.
- Students who possess sufficient basic academic abilities, and who aim to acquire a high level of specialized knowledge and techniques regarding healthcare.
- Students with excellent communication and collaboration skills.
- Students who are enthusiastic about contributing to the development of the local community and the revitalization of Fukushima Prefecture after the Great East Japan Earthquake.
- Students who have a spirit of scientific curiosity and creativity, and with the will to take their skills and knowledge to the global stage.





School of Medicine

Educational Philosophy of the School of Medicine

The School of Medicine's philosophy is to cultivate doctors who are compassionate, intelligent, skillful, genial and creative.

Message from the Dean

We nurture doctors who have high ethical standards and possess the necessary knowledge and technical skills.

Fukushima Medical University School of Medicine began with the establishment of the Fukushima Medical University preparatory course in 1947 under the old educational system, building on Fukushima Prefectural Women's Medical College, which had been established in 1944. Since then, based on the three pillars of education, clinical practice, and research, we have continued to produce outstanding clinicians and researchers who provide and promote high-quality healthcare for the residents of Fukushima Prefecture. In addition, in the research field, we have conducted original and important research while maintaining the tradition of cooperation between basic medical science and clinical research.

From an educational perspective, the unique courses at our university, such as Fukushima Studies and Radiation and Disaster Medicine, are arranged in a spiral form around the core curriculum with its basic content. This six-consecutive-year spiral curriculum makes it possible for students to revisit subjects offered by the life science and social medicine departments, the clinical medicine departments, and the Center for Integrated Sciences and Humanities, according to their growth and proficiency.

We seek students who have the enthusiasm to contribute to the restoration of Fukushima Prefecture from the Great East Japan Earthquake, who understand the mission handed down to them by our university, who have a spirit of scientific curiosity and originality and are willing to make great leaps forward. Studying at our university will equip you with the high ethical standards, extensive medical knowledge, and cutting-edge techniques that are required to become a leading doctor in your field.

FUJIMORI Keiya, MD, PhD
Dean of the School of Medicine



Educational Objective of the School of Medicine

Our educational objective is to help students develop the following skills and strengths:

Mind	Sincerity, compassion, and scientific curiosity
Intellect	Knowledge that can be used to save lives, wisdom for healing the sick, and an awareness of what may come
Skills	Acquisition of a strong skillset that will aid in the advancement of your chosen field
Harmony	Harmony with patients and their families, with colleagues, and with the people in the community, both locally and globally
Local	Experience and engage in community-based medicine, gathering important information, and disseminating it to the world

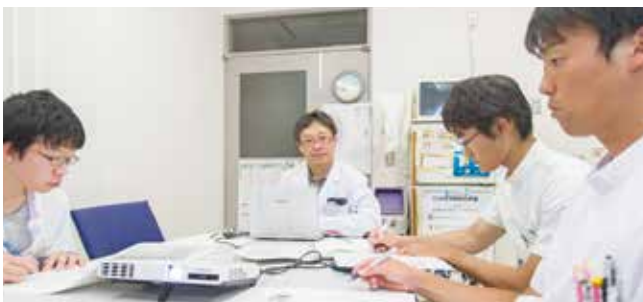
School of Medicine Overview

The School of Medicine was established as a prefectural medical school that was mandated to fulfil the mission of leading Fukushima's regional medicine. In the over 60 years since our founding, we have trained medical professionals who possess a strong knowledge base as well as the skills necessary to apply said knowledge, and have always contributed to the promotion of health and welfare for both Fukushima residents and residents of Japan.

Today, highly advanced healthcare that applies the latest knowledge and technology in life science is rapidly progressing. In addition, in response to our aging society, new efforts are expanding so that many more people can live long lives in good health. As these efforts unfold, the expectations placed on our university by Fukushima residents, who wish to have healthy lifestyles throughout their entire lifespan, are becoming even stronger. Our university has an obligation to continue providing the public with medical professionals who possess outstanding medical knowledge, skills, and judgment while responding properly and rapidly to the expectations of Fukushima residents. At the same time, as a university we boldly attempt to solve universal problems, and must continue to share our results with the world at large.

With "Vision 2014," we presented a vision which states that we will train medical professionals who possess advanced knowledge, strong technical skills, and high ethical standards, and who will contribute to the revitalization of Fukushima Prefecture. This vision embodies our resolve as a medical university to develop our university and to contribute to the promotion of the health of Fukushima residents.

We continuously investigate, define and implement medical care that reassures people that they will be able to live long and healthy lives. To provide such medical care, what should we aim for, and what should we accomplish? To answer these questions, we must search for new answers as we evolve, based on our track record and traditions that we have cultivated until this point.



Organization of the School of Medicine As of April 2024

School of Medicine	
Life Sciences and Social Medicine (16 departments)	
Neuroanatomy and Embryology	Anatomy and Histology
Cellular and Integrative Physiology	Systems Neuroscience
Biochemistry	Immunology
Bioregulation and Pharmacological Medicine	Microbiology
Basic Pathology	Hygiene and Preventive Medicine
Public Health	Forensic Medicine
Radiation Life Sciences	Epidemiology
Radiation Physics and Chemistry	Health Risk Communication
Clinical Medicine (38 departments/1 section)	
Internal Medicine	
Cardiovascular Medicine	Hematology
Gastroenterology	Rheumatology
Nephrology and Hypertension	Diabetes, Endocrinology and Metabolism
Neurology	Pulmonary Medicine
Surgery	
Gastrointestinal Tract Surgery	Hepato-Biliary-Pancreatic and Transplant Surgery
Chest Surgery	Breast Surgery
Surgery Training Support Section	Cardiovascular Surgery
Neurosurgery	Orthopaedic Surgery
Plastic and Reconstruction Surgery	Obstetrics and Gynecology
Pediatrics	Ophthalmology
Dermatology	Urology
Otorhinolaryngology	Neuropsychiatry
Radiology and Nuclear Medicine	Anesthesiology
Emergency and Critical Care Medicine	Diagnostic Pathology
Laboratory Medicine	Infection Control
Blood Transfusion and Transplantation Immunology	Community and Family Medicine
Radiation Health Management	Thyroid and Endocrinology
Disaster Psychiatry	Radiation Oncology
Medical Oncology	Radiation Disaster Medicine
Rehabilitation Medicine	
Endowed Courses (27 courses)	
Institute of Biomedical Sciences	
Biomolecular Science	Cell Science
Molecular Genetics	
Radioisotope Center (RI)	
Laboratory Animal Research Center	
Postmortem Examination Center	
Institutional Research Office	



School of Nursing

Educational Philosophy of the School of Nursing

The School of Nursing's philosophy is to encourage students to study proactively, and develop high ethical standards, a strong sense of compassion, and the ability to think flexibly and logically in order to gain a deeper understanding of human existence and the dignity of life.

We also endeavor to produce nursing professionals

that help people by exercising their own abilities to maintain health. Furthermore, we teach our students to be able to adapt to social changes and provide support in various fields, including healthcare and welfare, while collaborating with professionals from those fields.

Message from the Dean

What is the necessary nursing for people?

Nursing is an activity aimed at supporting individuals, families, groups, and communities of all ages living in various settings, to live their lives fully and authentically, regardless of their health status. People live their lives in various places such as homes, communities, schools, workplaces, hospitals, and facilities, and even with the same health condition, their individual real life are diverse, with each individual having their own thoughts and values. Taking into account this individuality and diversity, the key lies in how nursing can be practiced to fulfill the needs of each person. Nursing is a scientific approach, basically based on the caregiver's interest and consideration for themselves.

Moreover, the practice of nursing, which involves individualized and diverse care, significantly contributes to the improvement of the quality of nursing care itself. Providing nursing care can be understood as a process in which both people and nursing professionals grow together. Nursing field and practice is a profound.

TAKAHASHI Koko
Dean of the School of Nursing



Educational Objectives of the School of Nursing

Our educational objectives are to prepare students to become healthcare professionals who:

1. Have a wide range of interests in culture and people, and insight into health and living life.
2. Understand the dignity of life and human rights, support people's decision-making, and take action to advocate for them.
3. Have a deep understanding of the ethics of medicine and care, and make judgments as well as act based on those ethics.
4. Are able to reflect on themselves and build better relationships through communication with others.
5. Understand the role that the nursing profession plays in the support process for improving the health of people, from the perspective of growth development and the environment surrounding daily life.
6. Are able to explore safe and effective care and practice nursing using critical thinking based on clinical judgment and rationale.
7. Understand the health needs of local communities, and can work with local specialists to explore social resources that people can use to solve their problems.
8. Understand the role of nursing and care management in accordance with the situation of the people in the areas and facilities they work in, to build a collaborative medical care team.
9. Are able to look back on their own abilities as a nursing professional, through self-evaluation and evaluation by others, and have a defined, positive attitude towards their chosen profession.

School of Nursing Overview

Changing the ways in which we think about health and healthcare system reform has been a necessity in Japan, due to its aging population as well as changes in disease patterns. To solve this, the first school of nursing run by a medical university in Japan was established in April 1998. It was set up as a new part of Fukushima Medical University, which had itself been established almost half a century earlier, in 1950.

The School of Nursing serves as a base for education and research on the health issues of local communities. This is based on the idea that nursing is performed, not by nurses alone, but by working with patients, and that the system of healthcare and welfare is rooted in the connections between people. Our goal is to create a faculty that is open to the community.

The School of Nursing's educational philosophy is built on the following three pillars: (1) forming a deep sense of humanity with a profound understanding of human existence and the dignity of life; (2) mutual growth and a way of thinking about caring in which both those who administer and those who undergo care will learn and grow together through their relationships with others and exercising their abilities to the fullest; and (3) training nursing professionals that can respond to societal changes and show leadership in a wide range of fields related to healthcare and welfare. In addition, we established the Graduate School of Nursing in 2002 with the aim of training professionals who have a high level of specialized knowledge, skills, and practical abilities, who can be active in nursing practice, research, and education.

We began our doctoral program in April 2022. Then, in 2023, we newly established the Department of Fundamental Nursing and established a midwife course in the Department of Midwifery and Maternal Nursing. We strive every day to aim for higher quality nursing practice and research.

Organization of the School of Nursing As of April 2024

Department of Human Life Sciences	Pathophysiological Sciences
	Human Structure and Function
Department of Fundamental Nursing	Fundamental Nursing
	Nursing Management
Department of Child Health and Mental Health Nursing	Child Health Nursing
	Mental Health Nursing
Department of Adult and Gerontological Nursing	Adult Nursing
	Gerontological Nursing
Department of Community and Public Health Nursing	Community and Public Health Nursing
Department of Midwifery and Maternal Nursing	Maternal Nursing and Midwifery

Yearly Schedule

Early April	Entrance Ceremony/First Semester Starts
June 18	University's Anniversary
Early July	Open Campus
Mid-July to August	First Semester Exams
Early August to Early September	Summer Vacation
Early October	Second Semester Starts
Mid-October	Kosho Festival
Late October	Anatomy Memorial Service
Late November	Recommendation-based Entrance Exam/ Entrance Exam for Working Adults
Late December to Mid-January	Winter Vacation
Mid-January	Common Test for University Admissions
From Mid-February	Second Semester Exams
Late February	General Entrance Exam (First Round)
Mid-March	General Entrance Exam (Second Round)
Late March	Commencement Ceremony, Spring Vacation





School of Health Sciences

Educational Philosophy of the School of Health Sciences

The School of Health Sciences cultivates professional medical science technicians (physical therapists, occupational therapists, radiographers, and clinical technologists) who broadly contribute to society, along with having high ethical standards and a deep sense of humanity, thereby meeting the needs of local residents, utilizing our experiences from the Great East Japan Earthquake and the Fukushima Daiichi Nuclear Power Plant accident. We also cultivate professionals who can forge their own paths in life and continue to grow, while constantly learning, think-

ing, and overcoming unexpected situations throughout their lives.

To realize this vision, we see things from the students' perspectives, and help them expand on their individuality. In addition, we systematically implement education that lets students acquire qualities and abilities that enable them to autonomously work while cooperating with various people. As we do this, we value the learning process for students in all our educational activities, while respecting the autonomy and diverse individuality of each person.

Message from the Dean

Celebrating Three Years Since the Founding of the School of Health Sciences

The School of Health Sciences was established in April 2021, as a result of the outflow of medical care personnel and increase in anxiety regarding poor health after the Great East Japan Earthquake.

This year, we celebrate three years since the founding of this school, and we are holding graduation-thesis seminars for our first-generation students. This is also a time for students to form concrete images of their future selves, and to prepare for moving on to further education or the working world. Our faculty would like to work together and strive to support the paths that students hope to proceed on in life. Our second- and third-generation students work hard on their studies while looking on at those who graduated before them. We are incredibly pleased to see such strong relationships being forged among our students.

Thirteen years have passed since the Great East Japan Earthquake, but Fukushima's recovery is not yet finished. We hope that our students in the School of Health Sciences become wonderful healthcare professionals who play roles in Fukushima's recovery.

YABUKI Shoji, MD, PhD
Dean of the School of Health Sciences



Educational Objectives of the School of Health Sciences

Our educational objectives are to nurture healthcare professionals who:

1. Have a high degree of knowledge and skills as professionals, and who can fulfill their roles as members in team medicine.
2. Can both autonomously and creatively grasp and solve problems, and continuously aim to learn and grow as people.
3. Can acquire and utilize knowledge regarding community medicine and natural disaster-related medical care.

School of Health Sciences Overview



At the School of Health Sciences, our faculty members (67 total: 15 each in four departments, and seven in the Integrated Center for Sciences and Humanities) have excellent track records in clinical experience, education, and research activities, are mainly responsible for education, and teach specialized knowledge and technical skills. These faculty members have come from all over Japan.

For our educational equipment, we have many cutting-edge devices that are used in medical care and research institutions. Using this equipment, we provide our students with effective and practical training that enables them to quickly apply what they have learned in the clinical setting after graduation.

Our campus was recently constructed as the Fukushima Ekimae Campus, just five minutes on foot from the east exit of JR Fukushima Station. This provides our students with an extremely convenient commute. In addition, as the campus is located in front of a busy station that is used by people of all ages, our campus contributes to the revitalization of the city.

Curriculum Characteristics

In addition to the faculty belonging to the School of Health Sciences, some classes are taught by faculty from the School of Medicine and the School of Nursing, as well as clinicians and other healthcare professionals from the university hospital. Through the practical education provided by this multifaceted stable of educators, we cultivate professional medical technicians who possess broad and deep understanding of medicine and medical care. We also teach distinctive lessons that can only be found at a general medical university, including collaborative courses conducted among our four departments and courses taught in tandem with the School of Medicine and the School of Nursing. Through these courses, students can gain real experience cooperating with people from various professions, and team medical care. Furthermore, we carry out a wide range of clinical practices with the cooperation of various medical institutions throughout Fukushima, mainly through our university hospital, which is the sole government-designated Advanced Treatment Hospital in the prefecture. In this educational environment, we educate students who can serve as leaders for medical technicians in Fukushima after they graduate.

Our school was founded after the Great East Japan Earthquake and Fukushima Daiichi Nuclear Power Plant accident, and therefore provides many courses related to community medicine and disaster medicine in Fukushima. Cultivation of professional medical technicians who can play active roles in providing community healthcare and support the restoration of Fukushima from a medical perspective is one of the school's themes. We systematically provide education that lets students acquire comprehensive abilities, including autonomy and cooperation, in addition to knowledge and skills as professional medical technicians. We do this while understanding the students' perspectives and respecting their individuality. The School of Health Sciences places great emphasis on cultivating healthcare professionals who can effectively meet the demands that society places on them.



Organization of the School of Health Sciences As of April 2024

Department of Physical Therapy
Department of Occupational Therapy
Department of Radiological Sciences
Department of Clinical Laboratory Sciences
Integrated Center for Sciences and Humanities



Special Course of Midwifery

Educational Philosophy of the Special Course of Midwifery

The Special Course of Midwifery aims to produce midwives who:

1. Possess the specialized knowledge, judgement, and skills that can be utilized for women and families, mainly during the perinatal period, in order to support a healthy life related to reproductive health and rights.
2. Possess a sense of responsibility towards life, a rich sense of humanity, and the ability to provide care with empathy.

Message from the Director

To support the power of women's "living will"

In order to educate highly skilled midwives with advanced expertise and techniques, our university established a separate department specializing in midwifery in April of 2023.

Midwives provide midwifery care based on their own judgment throughout women's lifecycle, however, the maternity cycle focusing on childbirth being is the stage where women and mothers need midwives the most and where midwives can provide their expertise prominently. In the midwifery department, students learn specialized knowledge for this purpose and develop the observational, diagnostic, and practical skills necessary for midwifery care.

Furthermore, students learn deeply care for women and families throughout the lifecycle, especially on the perinatal period, and learn to support the "life" and "livelihoods" of women and families.

Midwives involved in matters of "life" are required deep affection for humanity and high ethical morals. We will educate midwives who can continuously self-learning and improve their specialty, who is independent as professional, and who can support the woman lives comprehensively for that woman can safely and confidently childbirth and upbringing for future generations.

TAKAHASHI Koko
Director of the Special Course of Midwifery



Educational Philosophy of the Special Course of Midwifery

In the Special Course of Midwifery, we aim to cultivate midwives who:

1. Respect life, be compassionate to people, and acquire the ethical sensitivity necessary to respect the autonomy of women in their care.
2. Possess specialized knowledge and skills based on scientific evidence, and be able to acquire safe, reassuring, and effective maternity care skills.
3. Possess advanced skills in women's healthcare, in order to provide lifelong aid in their patients' endeavours to live full lives.
4. Demonstrate expertise as a midwife and as a member of perinatal care teams, and acquire the practical skills of a midwife that can contribute to the improvement and development of the health-care, medical care, and welfare of women, young and old, in Fukushima, by cooperating with various professions and institutions.
5. Study midwifery with clinical thought, and acquire specialized, autonomous skills that lead to self-improvement as midwives.

Special Course of Midwifery Overview

The Special Course of Midwifery was established in April 2023 to cultivate high quality midwives, providing them with high level knowledge and technical skills. This is done with the aim of making Fukushima Prefecture a place where children, our future, can be born and raised, as we proceed with restoration following the Great East Japan Earthquake and Fukushima Daiichi Nuclear Power Plant accident. Here, students can receive high quality education from our six full-time faculty members, who have vast clinical and educational experience. During the one-year study period, students acquire qualifications that make them eligible for the National Midwifery Examination, perform hands-on midwife duties in the local community as work-ready professionals, actively assume important roles related to the healthcare of mothers and children, which is the core of midwifery. In addition, we train students so that they will be able to provide autonomous midwifery care, which not only increases the satisfaction of mothers but also helps to improve their own abilities, and play a role in identifying issues and proposing solutions in their clinical environment by exercising their critical thinking skills.

Curriculum Characteristics

We seek to train midwives who can contribute to the health-care of mothers and children, so that children can be born and raised safely, as we proceed with the restoration of Fukushima Prefecture. The Special Course of Midwifery at our university envisions its graduates to be midwives possessing the diagnostic and technical skills necessary to practice midwifery with a strong sense of ethics and passion to contribute to the promotion of good health and well-being among the local community. Our curriculum consists of the three fields of Fundamental Midwifery Studies, Practical Midwifery Studies, and Advanced Midwifery Studies.

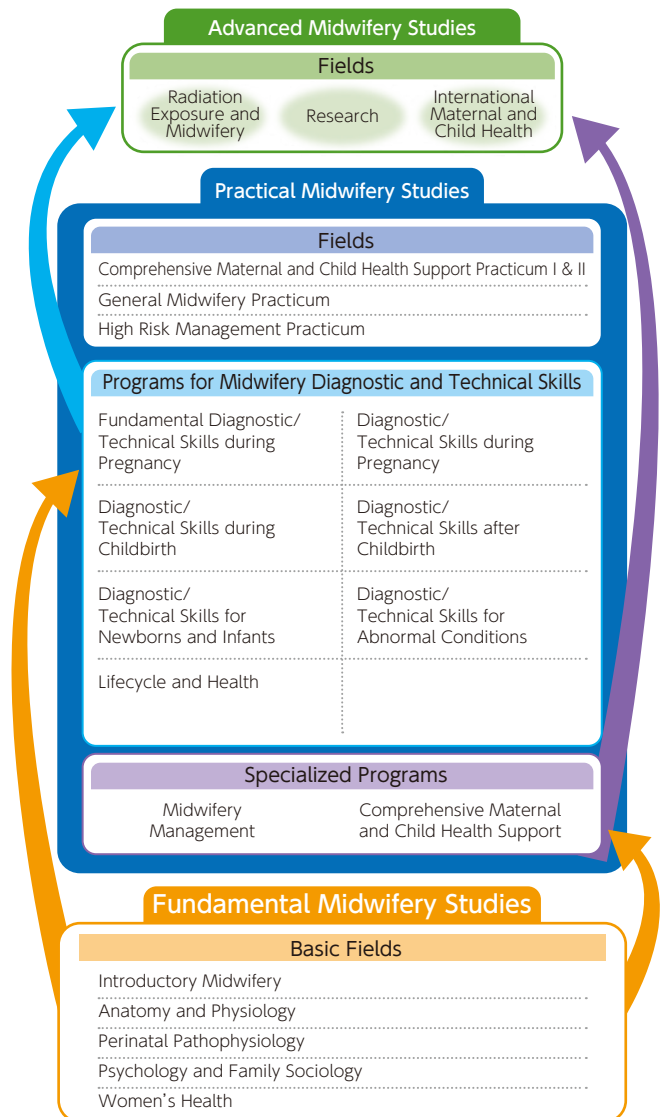


Curriculum Tree

Ideal Image

Midwives possessing midwifery diagnostic skills and technical skills necessary to practice midwifery while maintaining a strong sense of ethics and passion to contribute to the promotion of good health and well-being in the local community.

1. Able to practice midwifery care with high ethical standards and a rich sense of humanity as its foundation
2. Possess the necessary midwifery diagnostic and technical skills for women and their families at each stage of the maternity cycle, and able to engage in optimal midwifery care
3. Able to provide support that responds to women's health at each stage of the life cycle.
4. Able to link and cooperate with various professions and institutions, and to be able to autonomously work as part of a team
5. Able to address midwifery issues from a research perspective



Graduate Schools

Graduate School of Medicine/
Graduate School of Nursing

Graduate Schools Overview

The Graduate School at Fukushima Medical University aims to train researchers and specialized staff who can autonomously contribute to the development of medical care, and to create new medical studies and nursing studies.

The Graduate School of Medicine provides one doctoral program and two master's programs. The Doctoral Program of Medicine aims to foster researchers in various fields of medicine. The Master's Program of Medical Science targets graduates who did not previously specialize in medicine, and the Joint Master's Program of Disaster and Radiation Medical Sciences targets working members of society such as nurses and local government employees.

In the Graduate School of Nursing, we provide one doctoral program and one master's program. The Doctorate Program of Nursing aims to train future nursing scientists who can actively work as researchers, educators, and nursing practice leaders. The Master's Program of Nursing trains nursing professionals responsible for the development and research of nursing assistance methods, as well as nursing professionals (specialized nurses) and midwives who have advanced specialized knowledge, technical skills, and excellent practical capabilities.

Program Structure of the Graduate Schools

	Program	Course	Degree to be conferred
Graduate School of Medicine	Master's Program of Medical Science Enrollment Limit: 10	Comprehensive Medical Science Course	Master's in Medical Science
		Social Science Course	
	Joint Master's Program of Disaster and Radiation Medical Sciences Enrollment Limit: 10	Medical Science Course	Master's in Medical Science
		Healthcare Nursing Course	Master's in Nursing
Doctoral Program of Medicine Enrollment Limit: 60	Advanced Medical Researcher Course	Doctor of Philosophy in Medicine	
	Specialist Medical Scientist Course	(Specialized Medicine+) Doctor of Philosophy in Medicine	
Graduate School of Nursing	Master's Program of Nursing Enrollment Limit: 15	Researcher Course	Master's in Nursing
		Clinical Nurse Specialist (CNS) Course	(CNS Certification Qualification +) Master's in Nursing
		Midwifery Course	(Midwifery National Exam Qualification+) Master's in Midwifery
	Doctoral Program of Nursing Enrollment Limit: 2 students		Doctor of Philosophy in Nursing

Philosophy of the Graduate School of Medicine

1. Nurture researchers who aim to advance medicine and embark up on original scientific research.
2. Develop highly specialized clinicians who have correctly learned research methodology.
3. Cultivate researchers and high-level professionals who can actively work in various fields related to medicine and medical care.

Doctoral Program of Medicine, Overview Study Period 4 Years

The doctoral program aims to mainly accept graduates of our School of Medicine, but also those who have completed a master's program in other fields, and aims to offer them opportunities to deeply explore the field of medicine.

Upon entering, students who join this doctorate course choose either the Advanced Medical Researcher Course or the Specialist Medical Scientist Course. The former aims to train students who aim to become medical researchers; those who will support the future of medicine and expand the borders of medical science.

The latter is mainly aimed at students who have finished their post-graduate clinical training and wish to undergo specialized training to be eligible for board-certified specialists in their chosen fields. This course aims to develop clinicians who have advanced and specialized clinical abilities, as well as the ability to conduct research in the clinical setting, and offers the necessary classes to achieve these ends.

Curriculum Characteristics

As part of the basic curriculum, students in the Advanced Medical Researcher Course are required to take a compulsory class called Introduction to Medical Research. In addition, Introduction to Medical Science Research, which mainly focuses on experiments, is also required. For students in the Specialist Medical Scientist Course, Advanced Human Studies is a compulsory class. In 2013, we began to offer Research Design Studies, which allows students to learn basic research skills while conducting studies first-hand.

In each of these courses, students acquire knowledge on medical research by taking these basic educational subjects, and that knowledge will serve as the foundation of their research.

To deepen the understanding in their chosen fields of specialization, students choose subjects from among the specialized fields that correspond to Advanced Medicine and Advanced Medical Practicum. Students are also encouraged to take classes that are outside of, but related to, their chosen fields of specialization in order to expand and develop their research, and develop the ability to solve problems from a wider perspective. Moreover, in order to gain a fuller understanding of the advancement and refinement of medicine and medical practice, Graduate School Seminars, which focus on advanced research in a variety of fields, are also provided. These seminars are compulsory for all courses.

As the ultimate goal of our education in these courses, we will provide research guidance for thesis preparation in each field.

Master's Program of Medical Science, Overview Study 2 Years

This program provides an intensive education in medical science to students who have completed an undergraduate program in fields other than medicine and possess both a broad knowledge base and unique perspectives. By integrating knowledge from various disciplines, we aim to train our students so that they can be active as researchers, engineers, and specialists, integrating their interdisciplinary knowledge into a variety of fields related to medicine and medical practice.

After completing this master's program, students are encouraged to move on to the doctoral program (typically completed in four years; three years for students with superior research track records) to enhance their abilities as researchers, acquiring higher-level specialized knowledge and research methodologies.

Curriculum Characteristics

This major provides a short-term, intensive education in medical science to students who are not doctors and have completed an undergraduate program in fields other than medical education. Therefore, the curriculum mainly consists of basic medicine classes and societal medicine classes, in addition to a small number of clinical medicine classes, with a design to enable the study of medicine from a scientific perspective.

The acquisition of medical knowledge and technical skills through lectures alone is difficult; thus, we also offer courses that incorporate a practical element. In 2017 we updated our curriculum so that students are divided into one of two courses – the Integrated Medical Science Program and Social Science Program. We cultivate healthcare professionals who can actively contribute as researchers, educators, and high-level specialists in various fields related to medicine and medical care by integrating knowledge of different disciplines.

Joint Master's Program of Disaster and Radiation Medical Sciences Overview Study Time 2 Years

The unprecedented large-scale and multitude disaster of the 2011 earthquake, tsunami, and nuclear accident made it clear that we had a considerable lack of healthcare personnel who could adequately provide long-term medical care following a disaster, from the emergency phase to the recovery phase.

With this background taken into consideration, in 2016 we began the Joint Master's Program of Disaster and Radiation Medical Sciences in collaboration with Nagasaki University.

This program offers two courses that are mainly for working adults such as nurses and local government employees. These courses provide students with a wide range of knowledge that allows overhead views of natural and nuclear disasters, as well as radiation medicine as a whole. We aim to develop professionals who have a knowledge base that enables them to act during disasters and appropriately respond to health hazards in the long term.

Curriculum Characteristics

Students in this program learn a wide range of skills divided into two courses (Medical Science and Health and Nursing), consisting of: basic classes such as Fundamental Radiation Medical Science and Introduction to Emergency Medicine; course-specific advanced classes such as Advanced Disaster Medicine and Disaster Community Nursing; and hands-on training classes such as Emergency Medicine Practicum. Students will acquire the know-how and ability to make proper judgments in the clinical and field settings by incorporating what they have learned through these lectures and practicums.

In 2020 we opened a satellite campus in Joban Hospital, Iwaki City, which provides an easy-to-join environment for people enrolled in the program who do not live near our Fukushima City campus.

Philosophy of the Graduate School of Nursing

The Graduate School of Nursing aims to develop professionals with advanced specialized knowledge, technical skills, and practical abilities who can work in sites where nursing is practiced, researched, and taught, and who can contribute to the creation and development of nursing science.

Educational Objectives of the Master's Program of Nursing

1. Nurture nursing professionals who have advanced specialized knowledge, technical skills, and practical abilities.
2. Develop researchers who can engage in the development and research of nursing methodologies.
3. Cultivate educators who can design career development programs for the nursing profession.

Specialized Courses in the Master's Program of Nursing

● Fundamental Nursing (Researcher Course)

Students investigate the generality and universality shared by all nursing fields, such as the functions and anatomy of the human body, as well as how nursing should be both practiced and taught, while learning different research methods in accordance with research objectives or the characteristics of research goals.

● Cancer Nursing (Researcher Course / CNS Course)

Students develop effective nursing methodologies to solve the health problems of cancer patients recuperating in various places, as well as their families, from the time of cancer diagnosis to the terminal stage.

● Adult Nursing (Researcher Course)

Students develop nursing methods in accordance with various health and disease stages, including developmental challenges and the activities of daily living of people who have suffered biological invasions from diseases and external injuries, as well as their families.

● Gerontological Nursing (Researcher Course)

Students develop nursing methods that support older adults to fully live their own lives in even if they are undergoing treatment or require hospitalization.

● Mental Health Nursing (Researcher Course/CNS Course)

Students develop nursing methods necessary to ensure that people with mental health issues can independently live their own lives.

● Maternal Nursing and Midwifery (Researcher Course/Midwife Course)

Students develop nursing methods for supporting women's health through their entire life cycle, with special focus on women in the maternity cycle and their families. In the Midwife Course, students can acquire the qualifications to take the Midwifery National Exam.

● Pediatric Nursing (Researcher Course / CNS Course)

Students develop nursing methods for supporting the healthy lives of families raising children, as well as the necessary methods for improving the QOL of children with health issues and their families.

● Community Nursing (Researcher Course)

Students develop nursing systems and methods for individuals and groups with various health conditions, and to address health issues for local governments, corporations, and individuals receiving visiting care.

Educational Objectives of the Doctoral Program of Nursing

1. Develop educators and researchers of nursing who, in education and research institutions in nursing universities, study methodologies for care and care system development that meet the needs of complex and diverse ranges of people, who can independently conduct research that contributes to systemization and development of said methodologies, and who can both implement their research findings in nursing practice and advance the quality of nursing education using not only said findings, but also their leadership skills.
2. Nurture leaders (nursing practice leaders) who, in nursing practice sites such as hospitals and other healthcare facilities, independently conduct research in their own organization and drive joint research with other education and research institutions, such as nursing universities, and who can lead in the implementation of their research results into nursing practice.

Doctoral Program of Nursing Overview

In April 2022, the Fukushima Medical University Graduate School of Nursing established its doctoral program (in the field of practice and development of nursing) with the aim of having students develop and deepen the specialized knowledge they have learned until that point in the master's program from a nursing practice perspective, and to cultivate these students as researchers and leaders who can pass on their findings to institutions where nursing is practiced.

~Field of Practice and Development of Nursing~

Practice and Development of Nursing aims to establish new methods of care that are necessary in modern nursing, as well as systems that are designed to provide such care in a timely and appropriate manner. These goals are met by conducting research into, and providing education on, the methodologies that would be most effective in the implementation of the above-mentioned care and systems.

We aim to develop original and high-quality nursing practices that assist with solving increasingly complex and diverse health issues, and to solve the health issues of residents who wish to live in areas they are familiar with, and local regions which have uneven distribution of health care and welfare resources. We also aim to help students acquire the skills necessary to create continuous nursing practice systems, which includes collaboration with various professions.

Fukushima Medical University Hospital



A hospital that evolves to meet the needs of the residents of Fukushima, providing quality medical care to the utmost of our abilities.

TAKEISHI Yasuchika, MD, PhD
Fukushima Medical University Hospital Director

The basic philosophy of our hospital is, "Evolving to meet the needs of the residents of Fukushima, providing quality medical care to the utmost of our abilities." Based on this basic philosophy, we bear the responsibility of providing advanced medical care to the residents of Fukushima, as the only advanced treatment hospital in the prefecture. We also develop healthcare professionals who have a high level of knowledge and various skills that can contribute to the enhancement of regional medical systems and revitalization of Fukushima. We collaborate with our university to conduct clinical research that will lead to the creation of new kinds of medical studies. We believe that ensuring healthy lives for Fukushima residents and assisting with the conquering of disease by putting these research results into practice is an important mission of our hospital.

Another important role we have is to contribute to regional medicine. In our recent handling of COVID-19, we have linked together with related institutions, such as the prefectural government, as well as local doctors' and hospital associations, to construct the "Fukushima Model," and we are ensuring and coordinating the proper functioning of the regional medical care system. We will continue to work our very hardest to contribute to medical care in Fukushima, and to continue being a university hospital that benefits the health of Fukushima residents.

All of the staff at our hospital, including approximately 650 doctors, 950 nurses, 600 technologists and technicians, and office staff, will continue to work and study hard, so that we are always able to provide patient-centered, compassionate medical care.



Aiming to be a hospital that anyone can use

The history of Fukushima Medical University Hospital can be traced to the medical lecture center of Shirakawa Temporary Hospital, established in the early Meiji Era in the 1800s.

The hospital faced some difficulties after its founding; it often operated under the threat of abolishment. However, thanks to the efforts of the faculty and the support of prefectural residents, they received approval to establish a medical university in 1952, paving the way for a new legacy as a university hospital. However, the hospital still had to overcome many additional difficulties, including rivalries among residents and internal disputes. In 1988, the university hospital moved from Sugitsumacho, in the center of Fukushima, to the suburb Higarigaoka, where it is still located to this day.

As a general hospital belonging to a medical university, we have 39 diagnosis and treatment departments and 778 beds. We strive to provide many kinds of advanced medical care and to improve our medical care provision system. While we are working towards these goals, we have a daily average of 570 patients entering the hospital, and a daily average of 1,494 outpatients (as of 2022), showing how our hospital is widely used by the residents of Fukushima.

At our hospital, we will remain a light of hope for the region and meet the expectations of the residents of Fukushima with our increasingly diverse medical care.



Basic Philosophy

Our university continuously evolves to meet the needs of the residents of Fukushima, providing quality medical care to the utmost of our abilities.

University Hospital Basic Policies

All staff at our hospital take great pride in their roles as healthcare professionals, and cooperate with each other to both ensure healthy lives for the people of Fukushima and contribute to the fight against disease.

- 1 Based on our high ethical standards, we respect life, human rights, and privacy, and provide patient-centered, safe, compassionate medical care.
- 2 We provide the highest standard of medical care and advanced medical care that meets the needs of each of our patients.
- 3 We nurture sincere and excellent healthcare professionals who support the future of Fukushima.
- 4 We place great importance on links with the local community and create new and better medical care.
- 5 We share information on the results of our ever-advancing medical care with Fukushima, Japan, and the rest of the world.



As a university hospital, new policies such as “perfectly implementing a 7 to 1 nursing system,” “functional improvements for appointment scheduling system,” and “constructing a new, better medical care information system” are being actively promoted while we proceed with a trinity of functions: clinical practice, research, and education. With this in mind, the doctors, nurses, pharmaceutical chemists and secretariats, along with the various and highly skilled technologists and technicians, work as a team to confront the illnesses that our patients suffer from.

In addition, our hospital environment is one that is easy to use for visitors; for example, we have a parking lot specifically for disabled drivers (Considerate Parking System). At our hospital, all staff members continually strive to create a better medical system that fights disease, together with our patients and their families.

Organization Chart As of April, 2024

Fukushima Medical University Hospital
Dept. of Clinical Quality Management/Dept. of Infection Control/Dept. of Medical Information/Center for Patient Support/Futaba Emergency and General Medicine Support Center/Core Disaster Medical Center/Dept. of Clinical Research Management/Dept. of Hospital Management and Strategy/Center for Medical Education and Training
Clinical Divisions (39 divisions)
Cardiology/Hematology/Gastroenterology/Rheumatology/Nephrology and Hypertension/Diabetes, Endocrinology and Metabolism/Neurology/Pulmonary Medicine/Kampo Medicine/Oncology/General Internal Medicine/Chest Surgery/Gastroenterology Surgery/Hepato-Biliary Pancreatic and Transplant Surgery/Breast Surgery/Pediatric Surgery/Endocrine and Thyroid Medicine/Endocrine and Thyroid Surgery/Cardiovascular Surgery/Neurosurgery/Orthopedic Surgery/Plastic and Reconstructive Surgery/Obstetrics/Gynecology/Pediatrics/Pediatric Oncology/Ophthalmology/Dermatology/Urology and Adrenal Endocrine Surgery/Otolaryngology-Head and Neck Surgery/Neuropsychiatry/Radiology/Radiotherapy/Nuclear Medicine/Anesthesia and Pain Medicine/Diagnostic Pathology/Dentistry and Oral Surgery/Emergency Medicine/Rehabilitation
Central Clinical Facilities (30 facilities)
Dept. of Clinical Laboratory Medicine/Medical Imaging Center/Surgical Center/Intensive Care Unit/Maternal and Perinatal Center/Dept. of Pathology/Dept. of Blood Transfusion and Transplantation Immunology/Dept. of Community and Family Medicine/Dept. of Endoscopy/Rehabilitation Center/Emergency and Critical Care Medicine Center/Clinical Oncology Center/Clinical Engineering Center/Dialysis Center/Pain Clinic/Thyroid and Metabolism Diagnosis Center/Brain Disorder Center/Prosthetic Joint Center/Genetic Diagnosis Center/Children's Medical Center/Organ Transplantation Department/Cardiovascular Department/AYA and Childhood Cancer Long Term Support Center/Dept. of Clinical Cancer Genomics/Reproductive Medicine Center/Advanced Minimally Invasive Surgery Center/Respiratory Disease Center/Dept. of Nutrition/Supply Center/Dept. of Innovative Research and Education for Clinicians and Trainees
Internal Organization
Central Sampling Room
Gender-Specific Medicine Center
Center for Clinical Trials
Department of Medical Support
Department of Nursing
Department of Pharmacy
Hospital Administration (Hospital Management Division, Medical Affairs Division [Management and Planning Office, Medical Cooperation and Consultation Section])

Aizu Medical Center

Providing advanced medical care and supporting medical care throughout the Aizu region

Aizu Medical Center was established as a satellite facility of Fukushima Medical University. As a facility equipped with clinical practice, education and research functions, we continue to support medical care in the Aizu and southern Aizu regions, while sharing healthcare responsibilities with local medical institutions, through mutual support and cooperation.

Clinical Divisions (26 divisions and 1 affiliated research institute)

General Internal Medicine/Kampo Medicine/Chinese Medicine Surgery/Cardiology/Hematology/ Gastroenterology/Endocrinology, Metabolism, Diabetology and Nephrology/Infectious Diseases and Respiratory Medicine/Cerebral Nerves Internal Medicine/ Neuropsychiatry/Intestinal Medicine/Colorectal Surgery/General Surgery/Thoracic Surgery/Orthopedic and Spinal Surgery/ Ophthalmology/Dermatology/Urology/Otorhinolaryngology/Radiology/Anesthesiology/Diagnostic Pathology/Dentistry/Rehabilitation/Palliative Care/Cardiovascular Surgery/Kampo Medical Research Institute Acupuncture and Moxibustion Division



Aizu General Hospital and Kitakata Hospital were re-established as Fukushima Medical University's Aizu Medical Center, which supports medical care throughout the Aizu region.

Our hospital is accredited by the Japan Council for Quality Health Care. We first received this accreditation in 2015, and it was renewed in 2020. The Council evaluates medical institutions as a third party so that patients can safely enjoy appropriate and high-quality medical care. Our hospital has been recognized as fulfilling these standards. We will continue to contribute to medical care in the local community while constantly endeavoring to improve its quality and safety.



A Base that supports clinical practice, education, and research

Aizu Medical Center provides advanced medical care as a university hospital, and serves as a place for the education and research of students and research doctors, respectively. In addition, we strive to provide medical care stipulated in national healthcare policies, such as infection control and medical care in rural areas and fulfill our functions of supporting medical care throughout the Aizu region by linking and cooperating with local medical care institutions.

Providing advanced medical care focused on specialized fields

Aizu Medical Center is equipped with facilities such as Chinese Medicine Center, Hematology Treatment Center, Advanced Endoscopy Center, and Advanced Spine Surgery Center. They all provide advanced medical care focused on specialized fields. In addition, we have a palliative care ward that provides an optimal care environment for cancer patients.

Research functions as a university hospital

Aizu Medical Center has established its own research center, which pours all of its efforts into medical engineering research through partnerships with private corporations, as well as clinical epidemiology research that widely covers the Aizu area. In addition, we have also established the Chinese Medicine Research Office, based on the history of herbal medicine cultivation at the "Oyakuen" (a medicinal herb garden established by a feudal lord of the Hoshina-Matsudaira clan. It conducts research on herbal medicine cultivation, as well as acupuncture and moxibustion medical care.

Basic Philosophy

We strive towards the research and development of advanced and cutting-edge medical care, work hard to nurture superior healthcare professionals with a rich sense of humanity, provide all patients, young and old, with safe and high-quality medical care, and contribute to the creation of new regional medicine.

Aizu Medical Center Objectives

To realize our basic philosophy, we aim to achieve the following:

- 1 Provide patient-centered, compassionate medical care, with respect for life, human rights and privacy, based on a high standard of ethics.
- 2 Provide the highest standard of medical care and advanced medical care that can reassure patients, to meet the needs of each of our patients.

- 3 Nurture enthusiastic and highly-skilled medical professionals who can support the lives and future of their patients.
- 4 Integrate the power of local medical care, research, and industry, and create new kinds of medicine and medical care.
- 5 Share information with Fukushima Prefecture, as well as Japan and the rest of the world, regarding our ever-evolving medicine and medical care.

Rights of and Requests to Patients

Aizu Medical Center is a part of Fukushima Medical University and plays roles as an institution that conducts clinical practice, education, and research. The center has established "Patient's Rights and Requests" in order to respect the dignity of patients and provide them with safe, high-quality medical care.

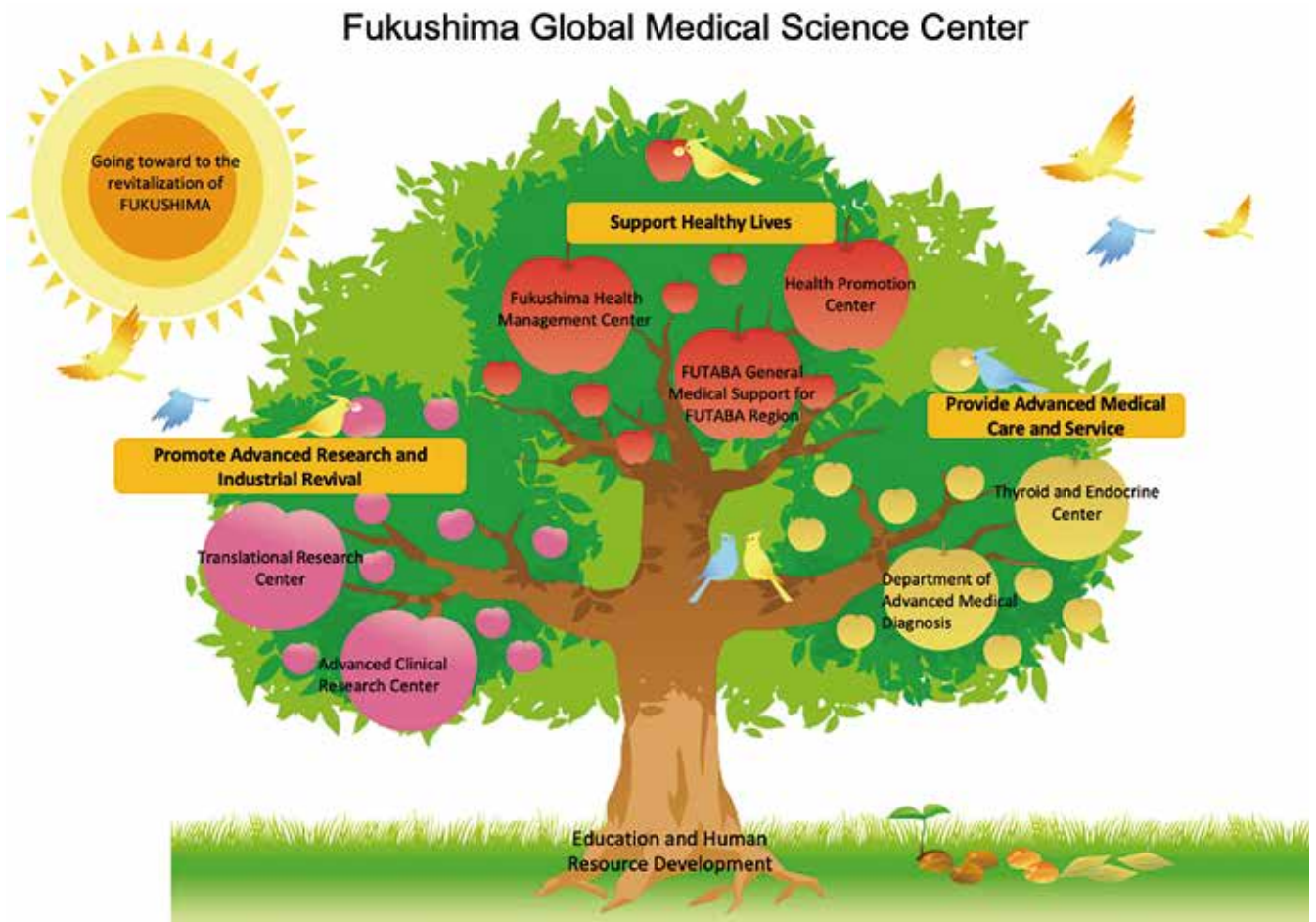
○Rights of Patients

1. Patients have the right to fairly receive quality and safe medical care.
2. Patients have the right to receive sufficient explanations via easy-to-understand phrasing and methods regarding diseases and treatment.
3. Patients have the right to choose, of their own accord, examination and treatment methods, and have the right to refuse any medical care should they wish to.
4. Patients have the right to receive a second opinion from another doctor regarding a diagnosis they have received, in order to consult with and judge with their primary care doctor to see if there are better treatments available to them.
5. Patients have the right to protect their own personal information and privacy. In addition, they have the right to request for their medical records be disclosed to them, so that they can be informed about the medical care they are receiving.
6. Our hospital carries out its mission as an educational institution. Patients have the right to decide or refuse whether they will participate in education or research upon receiving sufficient explanations regarding said education and research.

○Requests to Patients

1. Please provide as accurate information as possible regarding your own health, so that you can receive high-quality, safe medical care.
2. If there is anything about the medical care you do not understand, please keep asking us until you do understand.
3. Please follow hospital rules and manners, and be considerate so that all other patients can receive medical care in a comfortable environment.
4. In order for patients to be able to receive continuous and appropriate medical care, we promote function sharing and cooperation with local medical institutions. We kindly ask for your cooperation and understanding regarding this.
5. Our hospital carries out its mission as an educational institution. We kindly ask for your cooperation regarding the development of our healthcare professionals.

Supporting Fukushima's Revitalization from the Disaster through Medical Perspective Fukushima Global Medical Science Center



We aim to support Fukushima's revitalization from a medical perspective and aim to share the experiences and lessons we have learned from the disaster with the world

HAZAMA Akihiro, MD, PhD
Executive Director



The Fukushima Global Medical Science Center (FGMSC) was established as an organization to contribute to the restoration and revitalization of the local community following the 2011 disaster from a medical perspective, and disseminate its recovery status to the world. The Center serves three main roles: (1) maintain the health of the residents of Fukushima; (2) promote cutting-edge research and the revitalization of local industries; and (3) provide highly advanced medical care. FGMSC is comprised of five sub-centers, two divisions, and medical support for the Futaba area (through the Futaba Emergency and General Medicine Support Center). The Radiation Medical Science Center for the Fukushima Health Management Survey and the Health Promotion Center aim to protect the long-term health of prefectural residents following the Great East Japan Earthquake and nuclear accident, thereby improving the health of the residents and increasing their healthy life expectancy. The Translational Research Center and Advanced Clinical Research Center develop new diagnostic and testing agents, as well as therapeutic drugs to nurture growth in the medical industries, which will lead to revitalization of the region. The Advanced Clinical Division and the Thyroid and Endocrine Center use advanced medical equipment with the goal of detecting illnesses as early as possible, and they have a variety of specialists who collaborate with each other to provide advanced, specialized medical treatment. The Education and Human Resource Development Division works to support each center and division and cooperates with international institutions to cultivate the next generation of healthcare professionals. We have an obligation to share our experiences and lessons learned from the 2011 disaster and the nuclear accident with the world, as well as to future generations. We will continue to work tirelessly to achieve the mission of the Fukushima Global Medical Science Center.

Radiation Medical Science Center for the Fukushima Health Management Survey

Serving to maintain and improve the health of Fukushima's citizens through appropriate support and proactive dissemination of the survey results and our findings

YASUMURA Seiji, MD, PhD, Executive Director

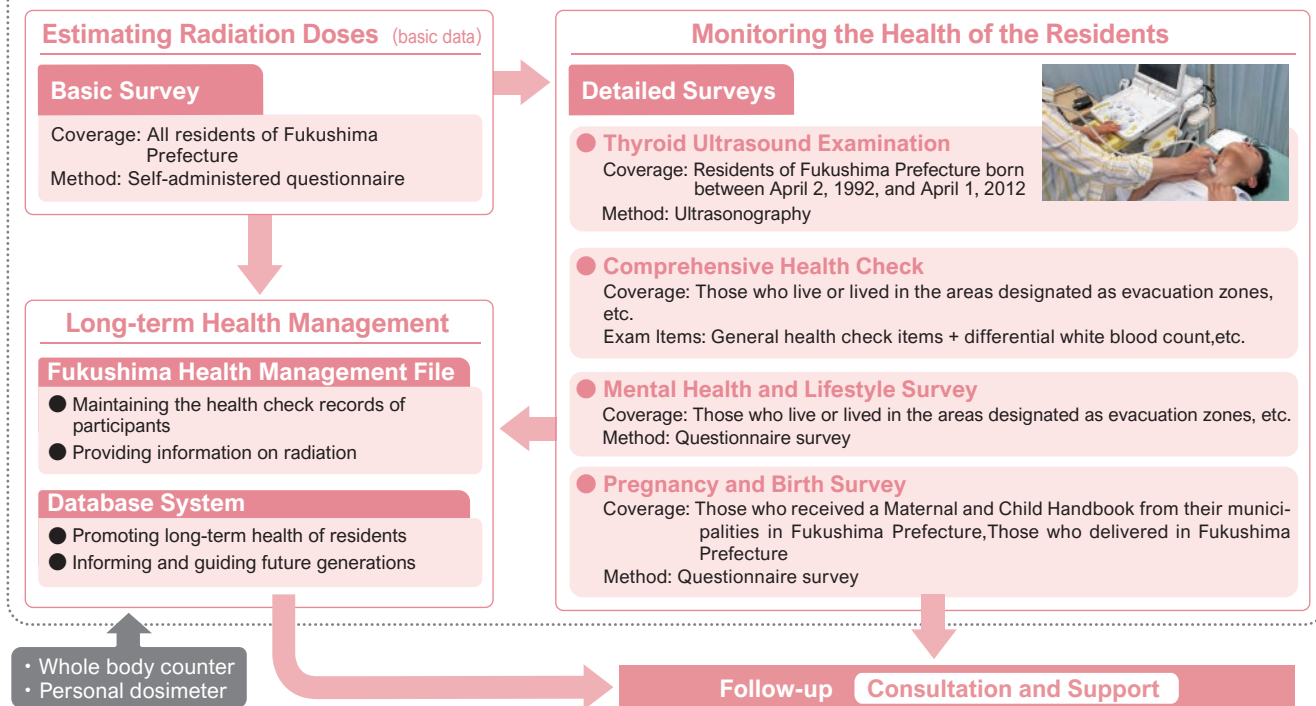
Fukushima Prefecture has been conducting its "Fukushima Health Management Survey" in response to 2011's Great East Japan Earthquake, its subsequent tsunami, and the following Fukushima Daiichi Nuclear Power Plant accident, the latter of which prompted evacuation from areas affected by environmental release of radioactive materials. The Center has been tasked by Fukushima Prefecture to conduct this survey, through which we tend to the long-term health of prefectural citizens by ascertaining their health status and providing appropriate prevention, treatment, and support.

Through its implementation, we work to continuously improve the Survey with the cooperation and support of administrative authorities and academic organizations, including universities and other research entities, both here in Japan and abroad.

Thirteen years since the Survey began, we need to reaffirm the Survey's original purpose—A survey to provide appropriate support—with a focus on disseminating trustworthy information through our research project under the "Collection and Dissemination of Data and Knowledge on Nuclear Disasters" commissioned in fiscal 2023 by the Fukushima Institute for Research, Education and Innovation (F-REI), which was established in 2023. Going forward, we will continue to improve this Survey in order to maintain and enhance the health of our citizens.



Fukushima Health Management Survey (for Fukushima residents)



The Center promotes understanding of the current status and results of the Fukushima Health Management Survey by issuing reports and holding international symposiums. We also attend prefectural health-related events, where we present the latest results of the survey.



Report



International symposium



Attending an event

Translational Research Center(TR Center)



Creating new bioindustry and jobs in disaster-stricken Fukushima!

WATANABE Shinya, MD, PhD, Executive Director

The TR Center was established on November 20, 2012 to promote the “Fukushima Translational Research Project” (hereinafter referred to as the “Fukushima Project”), which is one of the projects geared toward revitalization from the unprecedented damage caused by the Great East Japan Earthquake. The purposes of the Fukushima Project are twofold. The first is to revitalize the pharmaceutical-related industries by: providing processed specimens of biological origin that are the products of research and development, as well as their analysis information; and utilizing the Center’s unique technology to respond to research consignments from companies. The second purpose is to use the results of the Fukushima Project to create a new bioindustry in Fukushima and increasing the number of jobs.

In the first phase of the Fukushima Project, which ended in FY2020, we placed our focus on the needs of the industry, by creating processed specimens of biological origin with real usage value. We also accumulated various data (data from gene expression analysis, genome analysis, protein analysis, and drug response analysis of cells and organisms). These specimens have been registered as a trademark under the brand name Fukushima Collections®. We are now making great progress providing collaborative and contract research, and analysis data and evaluation models using the Fukushima Collections®

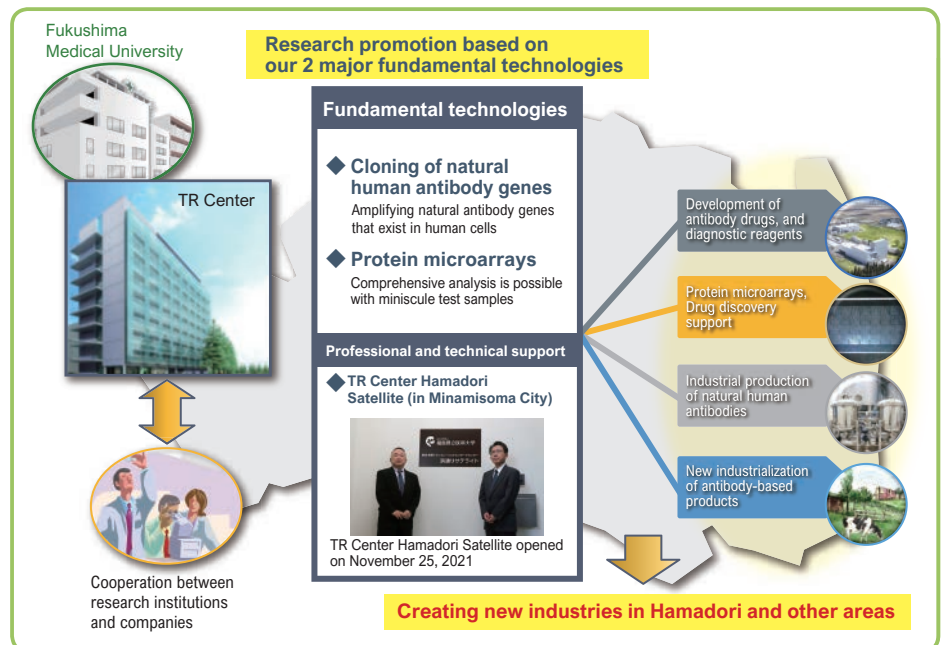
alongside pharmaceutical companies as well as testing and diagnostic agent companies.

The second phase of the Fukushima Project started in FY2021. In order to continue supporting pharmaceutical-related industries as we have until now, we plan to expand Fukushima Collections®. We will also promote the practical application of the natural human antibodies we obtain using the unique technology developed by the Fukushima Project.

Furthermore, with the aim of achieving more sustainable revitalization, we will actively apply and develop our products and unique technologies, not only in the fields of pharmaceuticals and diagnostic agents, but also in the fields of medical supplies, food and livestock.

Overview of the TR Center’s Fukushima Project Phase II

In the 2nd phase of the TR Center’s Fukushima Project, we will promote research geared toward practical applications of natural human antibodies based on the two major fundamental technologies of the TR Center as an initiative in the medical-related field, which is positioned as one of the priority fields of the Fukushima Reconstruction and Revitalization Plan. In addition, the TR Center Hama-dori Satellite in Minamisoma City will play a central role in providing professional and technical support for pharmaceutical-related companies seeking to be located to the Hama-dori area. Through this initiative, we are creating new industries and expanding employment in new industries related to the production of antibodies and products that use antibodies in the Hama-dori and other areas while contributing to the revitalization of Fukushima Prefecture.



TR Center aims to create new industries and employment in Fukushima in Hama-dori and other area by establishing the Fukushima brand in the process of supporting pharmaceutical-related industries. ⇒ For the revitalization of Fukushima

Advanced Clinical Research Center

Developing new nuclear medicine diagnostics and therapy using cyclotron and PET scanning systems

The Advanced Clinical Research Center was established as a core facility within Fukushima Prefecture to provide early diagnosis of various diseases, mainly using PET-MRI and PET/CT diagnostic imaging. The Center is also a research facility that can conduct everything from the manufacture and synthesis of radiopharmaceuticals to non-clinical studies and clinical research and trials. PET-MRI, first introduced to Japan by this Center in 2013, contributes to ultra-early detection and diagnosis by providing high-precision, high-quality images of cancer and diseases of the heart, brain, and nervous system.

In addition, equipped with Japan's only medium-sized cyclotron for the manufacture of medical radioisotopes, the Center has succeeded in the stable production of Astatine-211 (^{211}At), which is attracting attention as an alpha-emitting nuclide that kills cancer cells in sufficient quantities at a level that is effective enough for clinical use in nuclear medicine, and our research and development, as well as clinical trials, of therapeutic drugs are ongoing.

In order to further develop our achievements in research and development, we are collaborating with the Fukushima Institute for Research, Education and Innovation (F-REI), established by the government in Hamadori, Fukushima Prefecture, in April 2023, and are actively engaged in research and in the nurturing of highly-skilled professionals involved in the research. We will continue to contribute to the maintenance and promotion of the health of Fukushima Prefecture's citizens, as one of Japan's finest research and development centers for radiopharmaceuticals and nuclear medicine.



Medium-size cyclotron



PET-PET/SPECT/CT for small animals



PET-MRI for clinical use

A one-stop center including everything from manufacturing to clinical research and trials

Manufacture and synthesis of radiopharmaceuticals

The Center has five laboratories (hot labs) where various radioactive drugs are manufactured and synthesized. We also have two cyclotrons, one small and one medium-sized, with which we conduct advanced research into therapeutic drugs by manufacturing positron-emitting nuclides used in PET diagnosis, as well as Astatine-211 (^{211}At), which has recently attracted attention as an alpha-emitting nuclide for nuclear medicine therapy.

Non-clinical studies

We have established environments in which advanced cell and animal experiments can be conducted, such as a specific pathogen-free environment (SPF), and we conduct pharmacokinetic and pharmacology and efficacy studies using radionuclides. In addition, the Center is equipped with advanced imaging equipment and high-precision measurement equipment, and we use a variety of methods to evaluate radioactive drugs that are candidates for development.

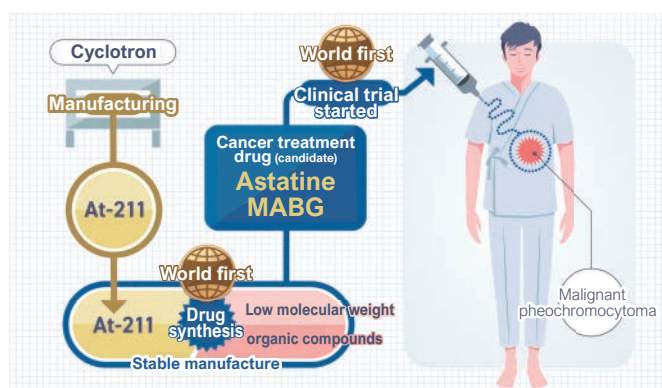
Clinical research and trials

Because we can manufacture radiopharmaceuticals in-house, we are able to conduct clinical research on therapeutic drugs using radiopharmaceuticals that make use of nuclides with short half-lives, and on therapeutic diagnostic drugs used for PET. We are also conducting research and development on equipment for radiopharmaceutical production. Furthermore, we are carrying out clinical trials focusing on radioactive therapeutic drugs using the RI ward of Fukushima Medical University Hospital, which is the largest of its kind in Japan.

A world-first! Stable manufacturing of Astatine MABG and the start of clinical trials

The Advanced Clinical Research Center has succeeded in being the world's first stable production, at a quality that can be administered to human patients, of Astatine MABG (^{211}At MABG), a candidate cancer drug that combines the alpha-emitting nuclide Astatine-211 (^{211}At), which kills cancer cells, with a low-molecular organic compound.

^{211}At MABG is expected to be able to target cancers that occur mainly in the adrenal glands, and increase therapeutic efficacy. We began the first ever trials in June 2022 to verify its safety and efficacy.



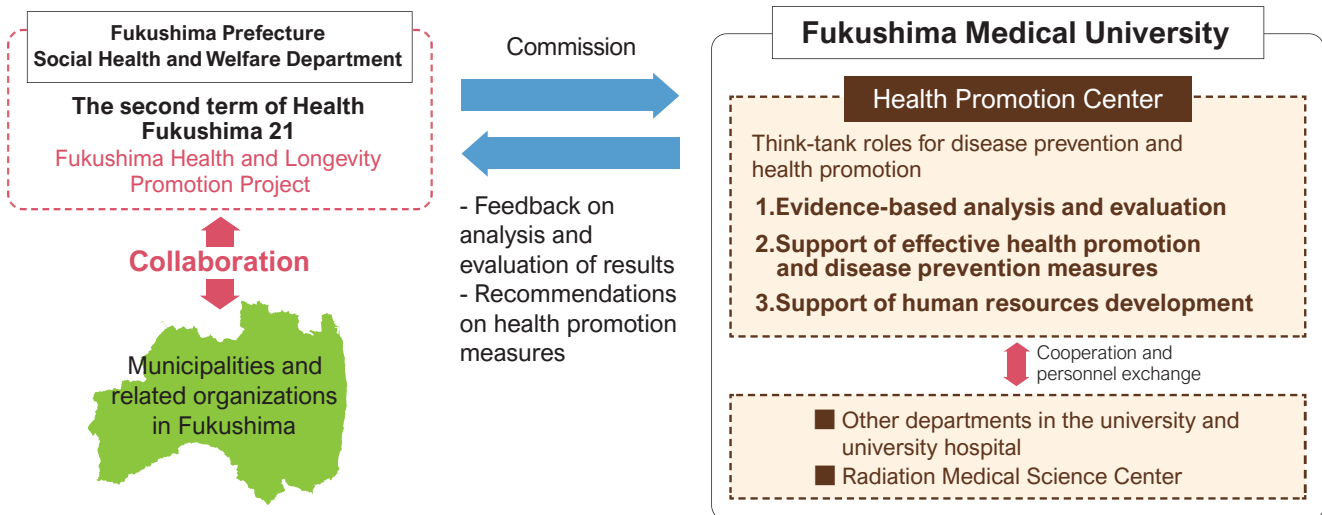
Health Promotion Center



Advancing healthy life expectancy and reducing health disparities

HOSOYA Mitsuaki, MD, PhD, Executive Director

The Health Promotion Center is expected to serve as a think-tank, playing roles in preventive medicine and health promotion under Fukushima Prefecture's motto "Let's make the people and communities of Fukushima come alive with smiles" as advocated in its "Health Fukushima 21 (the second term)". Specifically, our activities are as follows. First, we scientifically analyze and evaluate data regarding medical and nursing care insurance claims as well as health check results stored in the Fukushima Health Database (FDB) along with stroke and myocardial infarction cases registered in the prefecture's cardiovascular disease registry. Second, we identify health issues in the prefecture based on analysis and evaluation results, and offer advice and support to the prefecture for the creation of effective health promotion measures. We also provide support for municipal projects. Third, we hold development programs to train public health nurses and other healthcare workers who will take on the responsibility of health promotion activities in the prefecture. We work closely with the prefecture to ensure the continuous recruitment and retention as well as training of public health physicians. In addition, we hold events and produce videos to raise awareness among the residents of the prefecture about the importance of maintaining one's health. Through all these activities, we would like to support our residents in preventing life threatening diseases and extending healthy life expectancy.



At the Health Promotion Center, we create annual reports on the state of medical care and health check results using the FDB and plan to continue creating other reports based on the data accumulated in the FDB. In terms of supporting the development and training of human resources, in addition to holding training sessions for specialists in social medicine, we also hold various training sessions several times a year for professionals in health-related fields working for the prefecture and municipalities. Through a health promotion event called the "Iki-Iki Kenko-zukuri Forum" and online video content on health issues in Fukushima Prefecture, we encourage prefectural residents to improve their lifestyle and promote their health.



Training sessions for professionals in health-related fields working for the prefecture and municipalities



"Iki-Iki Kenko-zukuri Forum"



Video content

Thyroid and Endocrine Center



Serving as the contact point for internal medicine and surgical departments, we would like to provide patients with optimal medical care

SUZUKI Satoru, MD, PhD, Executive Director

Conventionally, diagnosis and treatment of endocrine diseases have been dealt with at the internal medicine and surgical divisions separately, but the Thyroid and Endocrine Center serves as the comprehensive contact point for these clinical divisions so that patients can receive optimal medical care. Clinical practice for endocrine diseases involves a variety of clinical divisions, including the Divisions of Thyroid and Endocrine Medicine and the Division of Diabetology, Endocrinology and Metabolism in internal medicine and, among the surgical divisions, the Divisions of Thyroid and Endocrine Surgery, Neurosurgery, Urology and Adrenal Endocrine Surgery, and Otolaryngology–Head and Neck Surgery. These divisions share information by among other means, holding regular conferences. We are enhancing efforts to provide patients with optimal comprehensive medical care by sharing information among specialists gathered from various divisions. Commissioned by Fukushima Prefecture, we treat a large number of patients with conditions that have been found to require treatment following the Fukushima Health Management Survey's Thyroid Ultrasound Examination. Clinical practice is conducted primarily by the medical professionals at our Center using the cutting-edge devices available at our Advanced Clinical Research Center.

Advanced Clinical Division

PICU
(Pediatric Intensive Care Unit)



Three Major Functions of the Mirai Building

1. Medical treatment following emergencies, disasters, and radiation exposure

3. Enhanced treatment environment

2. Medical treatment that also provides women and children with peace of mind

5th Floor: Children's Medical Center

- June 2017, establishment of a pediatric intensive care unit (PICU) with 4 beds
- June 2018, increase in the number of beds in the PICU from 4 to 6 beds
- October 2018, decrease in the number of beds per ward to 51 beds (decrease of 8 beds)
- November 2019, increase in the number of beds per ward to 53 beds (increase of 2 beds)

3rd Floor: Maternal and Perinatal Center

- MFICU - 6 beds · East Wing - 31 beds (mainly obstetrics)
- NICU - 15 beds · GCU - 12 beds

2nd Floor: Reproductive Medicine Center

- April 2019, opened as a central clinical facility.
- At the request of the prefecture, an infertility consultation center was established.

A: Maintenance of the Children's Medical Center

- A facility that accepts patients under the age of 15 and treats them comprehensively across all divisions.
- Enhancing the system of treatment for children with serious diseases.

B: Expansion of the Maternal and Perinatal Center

- A facility that provides advanced medical treatment for high-risk mothers, fetuses, and newborns in the prenatal and perinatal phases.
- Enhancing a medical environment that protects mothers and children, promoting the mothers' sense of security with regard to giving birth to, and raising, their children.

C: Strengthening our Reproductive Medicine Center

- A facility that functions as the base hospital in Fukushima Prefecture for fertility treatments.
- Providing advanced medical care related to fertility treatment and enhancing our consultation and support system.

Education and Human Resource Development Division

Fostering healthcare professionals dedicated to supporting the lifelong health of the people of Fukushima.

In order to sustain our activities long-term, this division fosters skilled healthcare professionals to the work done in our centers, and next-generation medical professionals who can contribute to disaster medicine, radiation emergency medicine, and/or regional medicine.

Clinical Medicine Departments

Radiation Health Management
Thyroid and Endocrinology
Disaster Psychiatry
Radiation Oncology
Medical Oncology
Radiation Disaster Medicine

Social Medicine Departments

Epidemiology
Health Risk Communication

Basic Medical Science

Radiation Life Sciences
Radiation Physics and Chemistry

Graduate School of Medicine Master's Program Joint Master's Program of Disaster and Radiation Medical Sciences

It has become clear that there is a shortage of healthcare professionals capable of responding to the compound disaster of natural disasters and radiation contamination due to the nuclear power plant accident. This is why we have established a graduate program in collaboration with Nagasaki University to provide education on treatment following disasters, radiation exposure, and radiation.

Medical Support for the Futaba Area

Securing secondary emergency medical services in the Futaba area and providing wide-area comprehensive medical support.

Fukushima Medical University established the Futaba Emergency and General Medicine Support Center in April 2016 to provide medical care to the Futaba area. Its role then shifted to one of support after the Futaba Medical Center, a prefectural facility, was established in 2018, by dispatching doctors and providing remote diagnoses, etc., providing medical support (individual guidance for untreated patients, etc.) for the residents of the Futaba area, and operational support of a multi-purpose medical helicopter. In this way, we protect the health of residents who have returned from their evacuation to this area, nuclear plant employees, and employees engaged in recovery projects. We also support the revitalization of the Futaba area from the medical side by resolving medical concerns, thereby encouraging former residents to come back to this area.



Multi-purpose medical helicopter

Academic Cooperation and Exchange Agreements with Overseas Universities

Fukushima Medical University has concluded agreements regarding academic cooperation and exchange with the following overseas universities. Through these agreements, we accept overseas students, conduct exchanges between researchers, conduct joint research, invite instructors, and carry out short term dispatches of our students.

Country	University	Contents	Agreement Name
People's Republic of China	Wuhan University (WU)	Short term dispatch of FMU's School of Medicine students Acceptance of WU's School of Medicine students	Basic Agreement to Cooperate
Socialist Republic of Vietnam	University of Medicine and Pharmacy, Ho Chi Minh City	Short term dispatch of FMU's School of Medicine and School of Nursing students	Memorandum for Academic Cooperation
United States of America	The Icahn School of Medicine At Mount Sinai	Short term dispatch of FMU's School of Medicine students Acceptance of Mount Sinai's School of Medicine students Joint research by students from both universities	Memorandum for Cooperation Between Universities
	The Ohio State University Department of Radiation Oncology	Short term dispatch of FMU's School of Medicine students	Memorandum for Cooperation
Republic of Singapore	National University of Singapore	Dispatch and acceptance of graduate school students Dispatch and acceptance of faculty Conducting joint research	Memorandum for Academic Cooperation Between Universities
Republic of Belarus ※suspended communication	Belarusian State Medical University	Short term dispatch of FMU's School of Medicine students	Agreement for Academic Cooperation Memorandum for Student Exchange Based on Agreement
	Gomel State Medical University	Short term dispatch of FMU's School of Medicine students	Agreement for Academic Cooperation Memorandum for Student Exchange Based on Agreement
Russian Federation ※suspended communication	North-Western State Medical University named after I.I.Mechnikov	Short term dispatch of FMU's Disaster and Radiation Medical Sciences students	Agreement for Academic Cooperation Memorandum for Student Exchange Based on Agreement
Taiwan	National Taiwan University College of Medicine	Short term dispatch of FMU's Disaster and Radiation Medical Sciences students	Agreement for Academic Cooperation
Federal Republic of Germany	Julius-Maximilians-University Würzburg	Dispatch and acceptance of undergraduate and graduate students Dispatch and acceptance of faculty Conducting joint research	Agreement for Academic Cooperation

International Exchange Projects

Establishment of Academic Exchange Agreement with National Taiwan University Graduate School

On December 29, 2022, Fukushima Medical University concluded the establishment of an Academic Exchange Agreement with the Graduate School at National Taiwan University (hereafter referred to as Taiwan University), located in Taipei City in Taiwan, with the aim of further promoting joint projects for medical research, jointly holding academic seminars, and promoting exchange between students.

The conclusion of this Agreement came about due to a commemorative lecture by the Head of Taiwan University's Graduate School of Medicine at a symposium to honor and commemorate the 150th anniversary of the start of modern medical education in Fukushima Prefecture, held on June 11, 2022. Taiwan University is the leading general university in Taiwan, and has an excellent global reputation. Being able to further deepen exchanges through joint research is extremely significant for our university.

The signing ceremony was held at National Taiwan University, where Vice President Hazama Akihiko of our university and National Taiwan University College of Medicine Dean Yen-Hsuan NI exchanged signed documents.



The Fukushima Institute for Research, Education and Innovation (hereinafter referred to as "F-REI")

F-REI is a special public corporation that was newly established in April 2023. This organizations intended to symbolize dreams and hopes for the restoration of Fukushima and the Tohoku region and drives the strengthening of Japan's science and technology and industrial competitiveness. It aims to become a world-class, core location for innovative restoration, in order to contribute to economic growth and the improvement of the lives of Japan's people.

On April 5, 2023, our university and F-REI have signed a letter of understanding with the aim of research and development, along with promoting cooperation that effectively uses both organizations' resources, including the nurturing and exchange of personnel, and mutual use of facilities and equipment as part of our broader, comprehensive collaboration.

Our university will continue with next-generation thyroid gland examination methods in the field of "Collection and Dissemination of Data and Knowledge on Nuclear Disasters," one of F-REI's research fields. We will also proceed with our endeavors into the development of technology for stable production of radioisotopes (RI), as well as the research and development of RI-labeled diagnostic agents and therapeutic drugs in the fields of "Radiation Science, Medicine and Drug Development, and Industrial Applications for Radiation."

Chronology (Excerpt)

1944: January 10	Inauguration of Fukushima Prefectural Women's Medical College authorized.	1997: December 19	Establishment of the School of Nursing approved.
1944: April 1	Fukushima Public Hospital becomes Fukushima Prefectural Women's Medical College-Affiliated Hospital.	1998: April 1	School of Nursing opened. 1st year enrollment - 80 students. 3rd year transfer admissions enrollment - 10 students (4-year course).
1947: June 18	Inauguration of Fukushima Medical University (old system) authorized. Inauguration of the Preparatory Course for the medical university was authorized. 1st year enrollment - 40 students (3-year course).	1999: October 30	Commemorative event held for 50th anniversary of the School of Medicine-affiliated Nursing School.
1950: March 30	Inauguration of the School of Medicine (old system) authorized (up to 40 students per year). 1st year enrollment - 40 students (4-year course).	2001: March 31	School of Medicine-Affiliated Nursing School abolished.
1950: June 18	Commemorative event held for medical university inauguration.	2001: December 20	Establishment of the Graduate School of Nursing approved.
1951: March 31	Women's Medical College and its affiliated hospital abolished. Preparatory Course of Medical University abolished.	2002: April 1	Graduate School of Nursing opened (admissions enrollment - 15 students; students admitted - 30 [2-year course]).
1951: April 1	Former Women's Medical College-Affiliated Hospital becomes Fukushima Medical University-Affiliated Hospital.	2004: April 1	Graduate School of Medicine reorganized (5 research courses to 4 majors. Admissions enrollment increases from 27 to 37).
1952: February 20	Establishment of Medical University (new system) approved.	2006: April 1	Fukushima Prefecture establishes Public University Corporation Fukushima Medical University. Public University Corporation Fukushima Medical University establishes Fukushima Medical University. Executive Committee established for the Public University Corporation. School of Medicine-affiliated hospital becomes Fukushima Medical University Hospital.
1952: April 1	Inauguration of Medical University (new system) was authorized. Prefectural 1st year enrollment - 40 students (4-year course). Prefectural Senior Welfare School becomes a Medical University-Affiliated Nurses' Training Center.	2008: January 28	Operations start for the Emergency and Critical Care Medicine Center on 4F of the east hospital building of the university hospital Helicopter ambulance ("Doctor Heli") begins operations.
1954: March 10	The Medical University-Affiliated Nurses' Training Center renamed Medical University-Affiliated Nurses' School.	2008: April 1	Except for some office positions, all staff become staff of the Public University, completing the incorporation of the university. Translational Research Center is newly established in the corporate organization. The enrollment for School of Medicine students increases (from 80 to 95 students) Opening of Graduate School of Medicine (Master's Program of Medical Science).
1955: January 20	Establishment of Medical University Premedical Course approved.	2008: June 22	"Anniversary 2008" event held to celebrate 20 years since the move to the Hikarigaoka Campus, 10 years since the establishment of the School of Nursing, and the complete incorporation of the university.
1955: April 1	Medical University Premedical Course inaugurated. 1st year enrollment - 40 students (2-year course).	2008: November 2	University logo trademarked. Fukushima Medical University Vision 2008 established. Student anthem "La la la Hikari-no-Oka" introduced.
1968: April 1	New university regulations established Preparatory courses for entering the medical university renamed to education courses.	2009: April 1	School of Medicine enrollment increased (from 95 to 100 students).
1969: January 22	Memorandum of agreement for student quota change for the graduate school accepted.	2010: April 1	School of Medicine enrollment increased (from 100 to 105 students).
1971: January 12	Student quota increased from 60 to 80.		
1973: June 15	RI Building completed.		
1983: September 16	University song "Hikari no Tori" (Birds of Light) introduced.		
1988: April 1	University headquarters was relocated from Sugitsumacho to Hikarigaoka.		
1997: September 6	Commemorative event for 50 years since university opening held.		

2011: February 1	Industry-Academia-Government Regional Collaborative Research Center newly established. Research Promotion and Strategy Office newly established in the corporate organization.	2017: April 1	The Training Center of Specified Medical Acts for Nurses is newly established in the university. The Medical Research Promotion Headquarters, Industry-Academia-Government Collaboration Promotion Headquarters, and Office of Intellectual Property Management and Utilization are merged to establish the Medical Research Promotion Strategy Headquarters.
2011: April 1	School of Medicine enrollment increased (from 105 to 110).	2018: April 1	Promotion Headquarters for launch of a new medical school campus are established in the corporate organization.
2011: September 1	The Fukushima Health Management Survey Headquarters newly established in the corporate organization. The Radiation Medical Science Center for the Fukushima Health Management Survey newly established.	2018: October 29	Operation of multi-use medical care helicopter begins.
2012: April 1	Revitalization Projects Promotion Headquarters, Regional Medicine Support Headquarters, Public Relations Strategy Office newly established in corporate organization. The Translational Research Center (TR) and Industry-Academia-Government Collaborative Research Center in the corporate organization are merged, and the Industry-Academia-Government Collaboration Promotion Headquarters is established.	2019: April 1	Midwife Training Course Establishment Preparation Office is newly established as an office in the Education and Research Support Section of the Administration Division.
2012: November 20	Fukushima Global Medical Science Center newly established in the corporate organization. The Radiation Medical Science Center for the Fukushima Health Management Survey is placed in a branch organization, and the Advanced Clinical Research Center and Medical-Industrial Translational Research Center are newly established.	2019: June 1	International Cooperation Strategy Headquarters is newly established in the corporate organization.
2013: April 1	School of Medicine enrollment increased (from 125 to 130 students).	2019: July 1	The International Exchange Office in the university organization is abolished, and the Global Exchange Center is newly established.
2013: May 12	Aizu Medical Center newly established (23 clinical divisions).	2020: April 1	School of Nursing restructured into 7 divisions.
2015: August 26	Designation of the university hospital as an Advanced Radiation Emergency Medicine Support Center and a Nuclear Disaster Medical Care/General Support Center.	2021: April 1	School of Health Sciences established (Departments of Physical Therapy, Occupational Therapy, Radiological Sciences, and Clinical Laboratory Sciences). School of Health Sciences Office is newly established in the Administration Division.
2016: October 28	Fukushima "Life and Future" Medical Center Building (Mirai Bldg.) completed.	2022: April 1	Doctoral Program of Nursing in the Graduate School of Nursing is established (enrollment - 2 students, 3-year course).
2016: December 11	Event held to commemorate the opening of Fukushima Global Medical Science Center.	2023: April 1	Special Course of Midwifery is established (1-year course). F-REI Cooperation Promotion Headquarters is newly established in the corporate organization. F-REI Cooperation Office is newly established as an office in the Revitalization Promotion Section of the Administration Division.



Introduction video of Fukushima Medical University

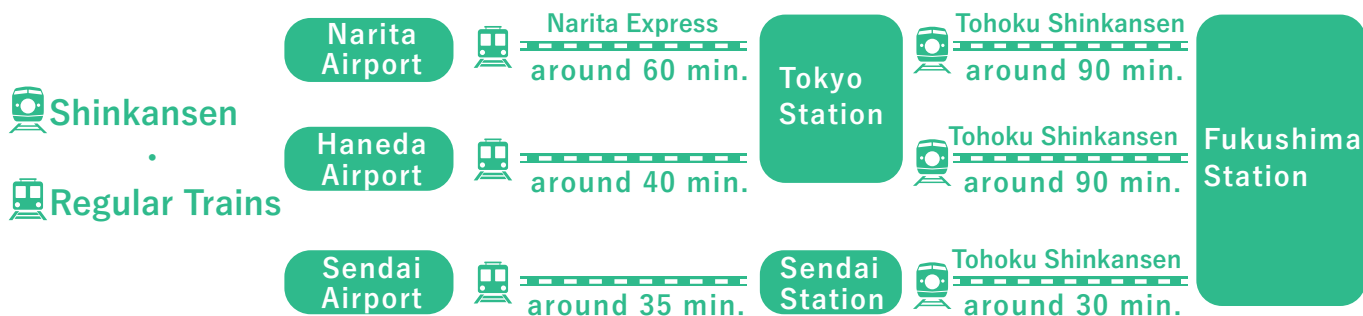
You can see the video on our website.

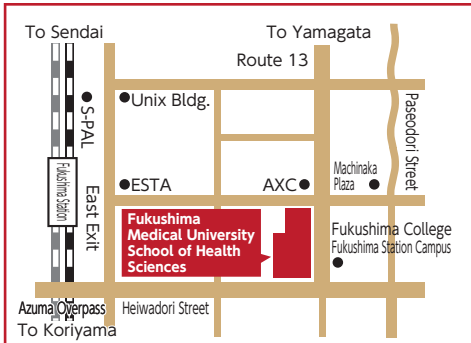
<https://www.fmu.ac.jp/univ/daigaku/sv.html>



Fukushima Medical University ACCESS

Fukushima Medical University's main campus is in Hikarigaoka, a suburb of Fukushima City, the capital of Fukushima Prefecture. Our Hikarigaoka campus includes Fukushima Medical University Hospital, with 778 beds and 39 departments providing general and advanced referral care. We cooperate with various institutions in Japan and overseas, striving to improve systems of healthcare delivery and meet or exceed the expectations of Fukushima residents with diverse medical needs.

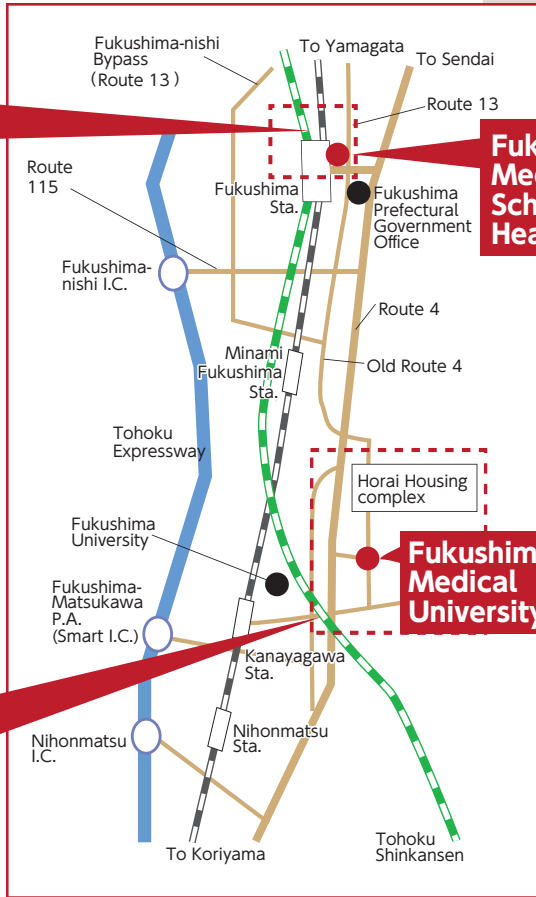




Fukushima Medical University School of Health Sciences

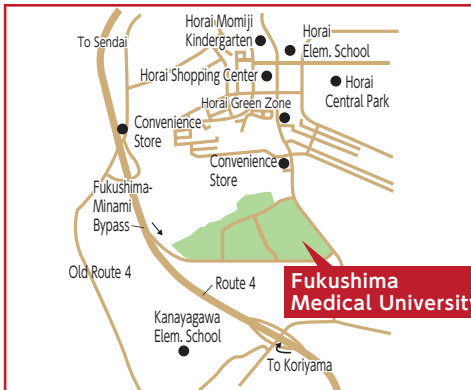
10-6 Sakaemachi, Fukushima City, Fukushima, 960-8516, JAPAN
 TEL: +81-24-581-5503
 FAX: +81-25-581-5528 (School of Health Sciences Office)
<https://fmu-hs.jp/>

From JR Fukushima Station around 0.5km, around 5 min. on foot



Fukushima Medical University School of Health Sciences

Fukushima Medical University



Fukushima Medical University

Fukushima Medical University

1 Hikariga-oka, Fukushima City, Fukushima, 960-1295, JAPAN
 TEL: +81-24-547-1111
 FAX: +81-24-547-1995
<https://www.fmu.ac.jp/>

By Car Approx. 13 min. after exiting the Tohoku Expressway at Fukushima-nishi I.C., or approx. 8 min. from the Fukushima-Matsukawa Smart I.C. (ETC-equipped vehicle only)

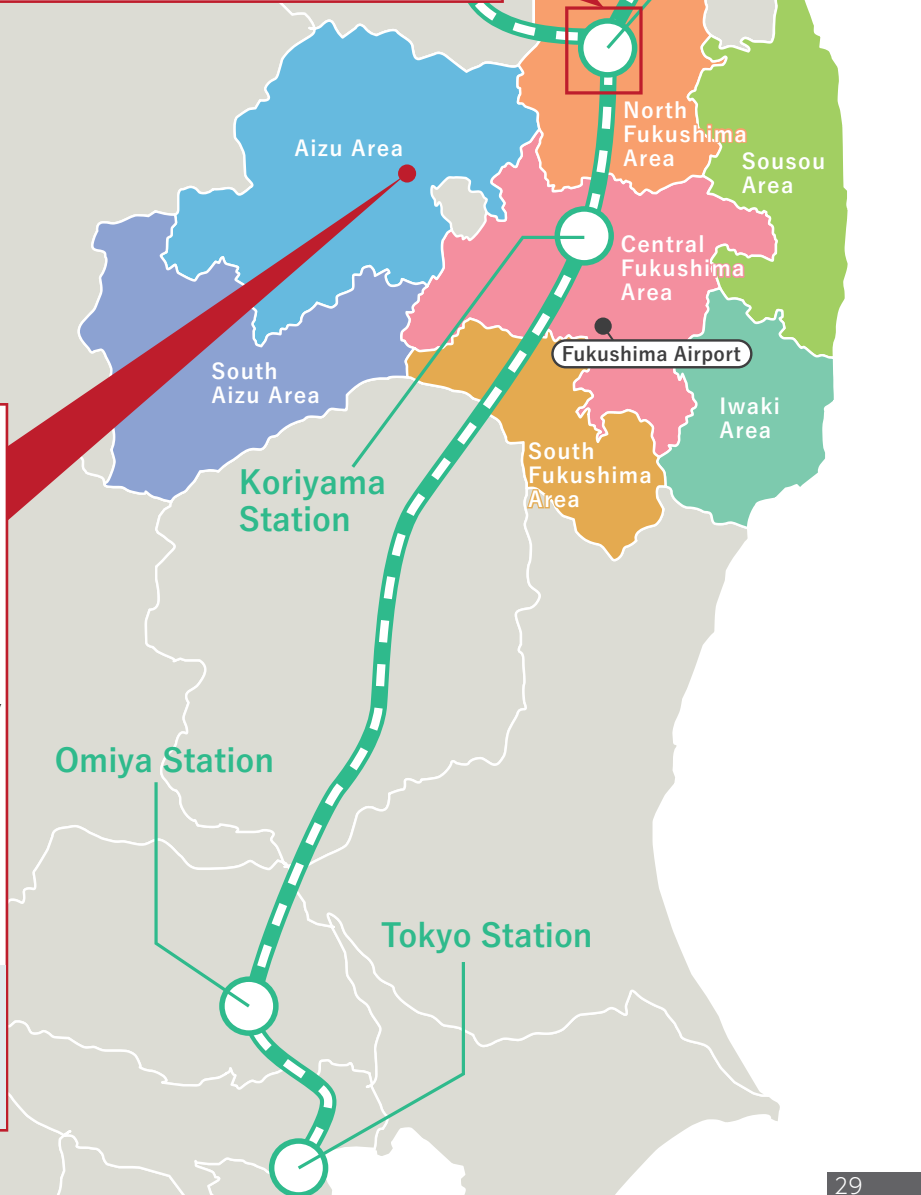
By Bus Get on a bus at No. 5 or No. 6 stands in front of the JR Fukushima Sta. (East Exit), and get off at the "Idai-byoin" or "Ikadaigaku-mae" stop. Approx. 36 min. required.



Aizu Medical Center

Aizu Medical Center

21-2 Aza-Maeda, Tanisawa, Kawahigashimachi, Aizuwakamatsu City, Fukushima, 969-3492, JAPAN
 TEL: +81-242-75-2100 (Reception)
 FAX: +81-242-75-2150 (General Affairs Section)
<https://www.fmu.ac.jp/amc/>



Fukushima Medical University Campus

Fukushima Medical University has 2 campuses – the Hikarigaoka Campus, which is located in a hilly area that is around 20 minutes by car from downtown Fukushima City, and the Fukushima Station Campus, which is around 5 minutes on foot from JR Fukushima Station’s east exit.

Hikarigaoka Campus

Schools and Research Buildings

- 1 Building 2 (Clinical Medical Research Building)
- 2 Building 3 (Life Sciences and Social Medicine Research Building)
- 3 Building 4 (Integrated Science Research Building)
- 4 Building 8 (School of Nursing Building)
- 5 Building 8 WEST
- 6 Building 10 (School of Medicine Research Facility)
- 7 Building 12 (New Workshop Building)

Shared Facilities

- 8 Building 5 (Welfare Building / Lecture Building / Workshop Building)
- 9 Building 6 (Lecture Building)
- 10 Building 11 (Clinical Lecture Building)
- 11 Lecture Hall
- 12 University Academic Information Center
- 13 Gymnasium
- 14 Baseball Field
- 15 Tennis Course
- 16 Japanese Archery Grounds
- 17 Archery Grounds
- 18 Land Sports Grounds

University Hospital

- 19 University Hospital
- 20 Mind and Body Medical Care Building
- 21 North Outpatient Building
- 22 High Energy Building
- 23 MRI Building
- 24 Secondary Emergency Medical Facility for Nuclear Disaster
- 25 Building 9 (Medical Research Center)
- 26 Operation Room Building

Fukushima International Medical Care Studies Center

- 27 Disaster Medical Studies / Medical Care Industry Building
- 28 Environment Kinetic Analysis Center Building
- 29 Advanced Clinical Research Center Building
- 30 Fukushima Life and Future Medical Center Building

Other Facilities

- 31 Building 1 (Management Building)
- 32 Faculty Security Office
- 33 Building 7 (Hikarigaoka Assembly Hall (Alumni Association Hall))
- 34 Monument for Departed Souls
- 35 Monument for Consoling the Spirits of Experiment Animals
- 36 Incinerator
- 37 Old Sewage Water Treatment Facility
- 38 Suginokoen (Childcare Center)
- 39 Yoshimi Villa (Nurse Accommodation)
- 40 Heliport
- 41 Life Saving Equipment Building



Hippocrates Tree

Sycamore trees (plane trees) are called Hippocrates trees, from the legend that the great doctor Hippocrates taught medicine in the shade of a tree. This tree is known as a symbol of medical universities, but the sycamore tree here at Fukushima Medical University comes from Kos Island in Greece, the origin spot for this legend.



Fukushima Life and Future Research Medical Center Building



Heliport

Car Parking Lots and Bicycle Parking Lots

- 42 Outpatient Parking Lot
- 43 Parking Lot
- 44 Outpatient Parking Lot
- 45 Parking Lot
- 46 Parking Lot
- 47 Parking Lot
- 48 Bicycle Parking Lot
- 49 Bicycle Parking Lot
- 50 Parking Lot

Map

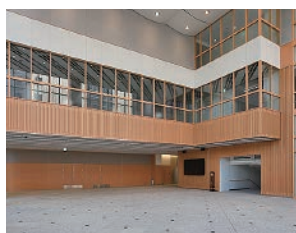
*The entire campus grounds are non-smoking.



Fukushima Station Campus



Fukushima Medical University School of Health Sciences



Entrance Hall



Everyday Life Activities Workshop Room



Analytic Chemistry Testing and Workshop Room



FUKUSHIMA MEDICAL UNIVERSITY

1 Hikariga-oka, Fukushima City, Fukushima 960-1295 JAPAN TEL +81-24-547-1111 (Main Number)

<https://www.fmu.ac.jp/>

Prepared and published by Planning and Financial Affairs Division, Fukushima Medical University
TEL +81-24-547-1013 FAX +81-24-547-1991